

NOTE: RESERVOIR RETURN PORT FROM CASE DRAINS OBSCURED BY TANDEM PUMP.

NOTE: FORWARD AND REVERSE PORTS ARE MIRROR ON THE LEFT WHEEL MOTOR.

ITEM	QUANTITY	PART NUMBER	DESCRIPTION
1	1	P002586	HYDRAULIC HOSE/ FROM TANDEM PUMP PORT B TO RIGHT MOTOR REVERSE PORT, H/N C001
2	1	P002587	HYDRAULIC HOSE/ FROM TANDEM PUMP PORT A TO RIGHT MOTOR FORWARD PORT, H/N C002
3	1	P002588	HYDRAULIC HOSE/ FROM TANDEM PUMP PORT D TO LEFT MOTOR FORWARD PORT, H/N C003
4	1	P002589	HYDRAULIC HOSE/ FROM TANDEM PUMP PORT C TO LEFT MOTOR REVERSE PORT, H/N C004
5	1	P002590	HYDRAULIC HOSE/ FROM SUCTION PORT #1 TO REAR TANDEM PUMP INLET, H/N C005
6	1	P002591	HYDRAULIC HOSE/ FROM SUCTION PORT #2 TO FORWARD TANDEM PUMP INLET, H/N C006
7	1	P002592	HYDRAULIC HOSE/ FROM AUX. PUMP PORT B TO SERIES CHECK VALVE INLET, H/N C007
8	1	P002593	HYDRAULIC HOSE/ FROM REAR PUMP CASE DRAIN TO RESERVOIR, H/N C008
9	1	P002594	HYDRAULIC HOSE/ FROM FORWARD CASE DRAIN TO RESERVOIR, H/N C009
10	1	P002951	HYDRAULIC HOSE/ FROM NEEDLE VALVE PORT B TO HOSES C013 & C015 H/N C024
11	1	P002596	HYDRAULIC HOSE/ FROM CHECK VALVE PORT C1 TO HOSE NUMBERS C14 & C16, H/N C011
12	1	P002597	HYDRAULIC HOSE/ FROM SUCTION PORT #3 TO AUX. PUMP PORT A, H/N C012
13	1	P002598	HYDRAULIC HOSE/ FROM HOSE C10 TO LEFT CYLINDER UP PORT, H/N C013
14	1	P002599	HYDRAULIC HOSE/ FROM HOSE C11 TO RIGHT CYLINDER DOWN PORT, H/N C014
15	1	P002600	HYDRAULIC HOSE/ FROM HOSE C10 TO RIGHT CYLINDER UP PORT, H/N C015
16	1	P002601	HYDRAULIC HOSE/ FROM HOSE C11 TO LEFT CYLINDER DOWN PORT, H/N C016
17	1	P002602	HYDRAULIC HOSE/ FROM HOSE C20 TO OIL COOLER INLET, H/N C018
18	1	P002603	HYDRAULIC HOSE/ FROM OIL COOLER OUTLET TO RETURN FILTER, H/N C019
19	1	P002604	HYDRAULIC HOSE/ SERIES CHECK VALVE OUTLET TO H/N C018, H/N C020
20	1	P002605	HYDRAULIC HOSE/ FROM V2 PORT ON PO CHECK VALVE TO SERIES VALVE BOTTOM WORK PORT, H/N C021
21	1	P002606	HYDRAULIC HOSE/ FROM V1 PORT ON PO CHECK VALVE TO SERIES VALVE TOP WORK PORT, H/N C022
22	1	P002950	HYDRAULIC HOSE/ FROM PO CHECK VALVE PORT C2 TO NEEDLE VALVE PORT A H/N C023

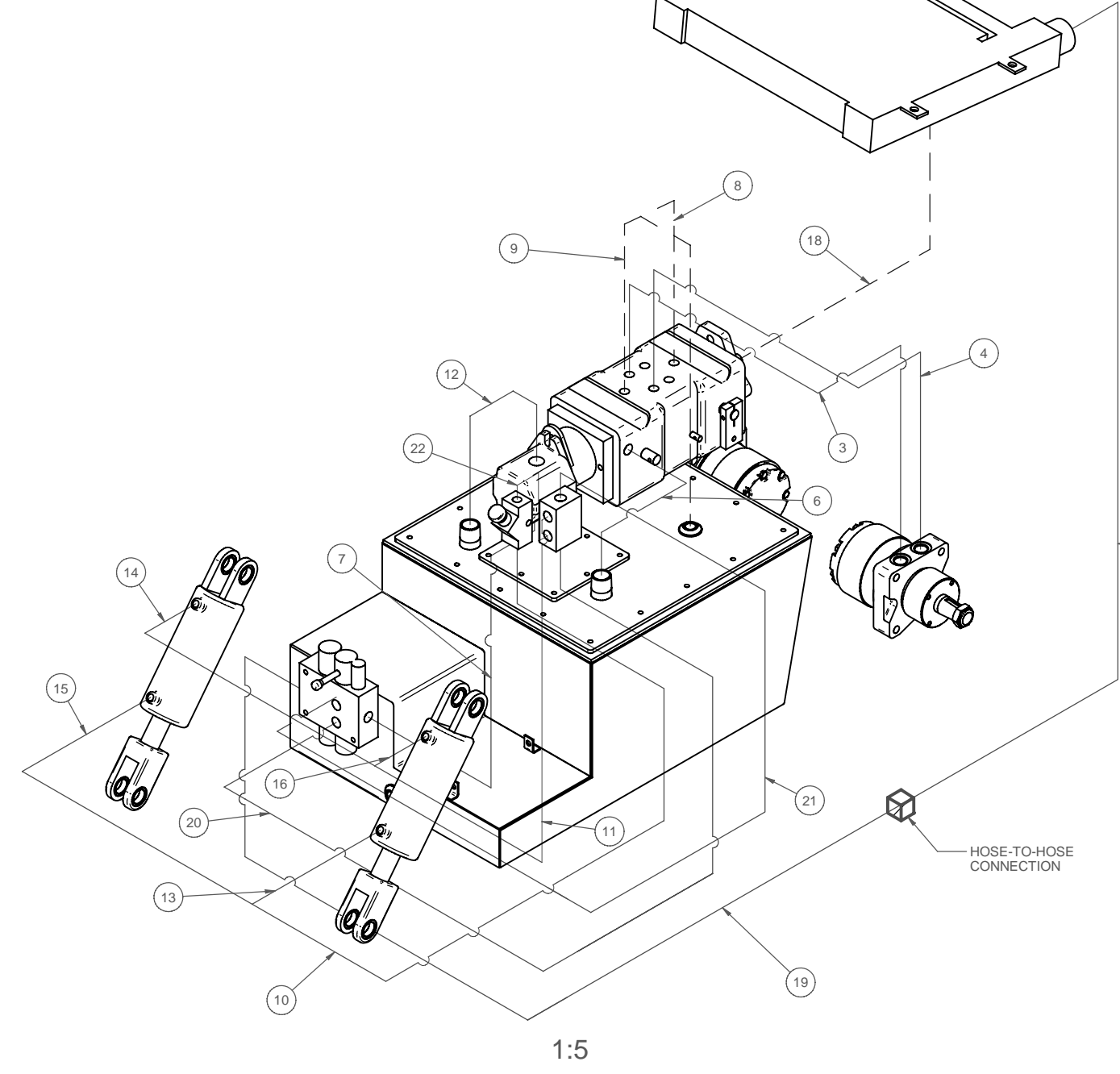
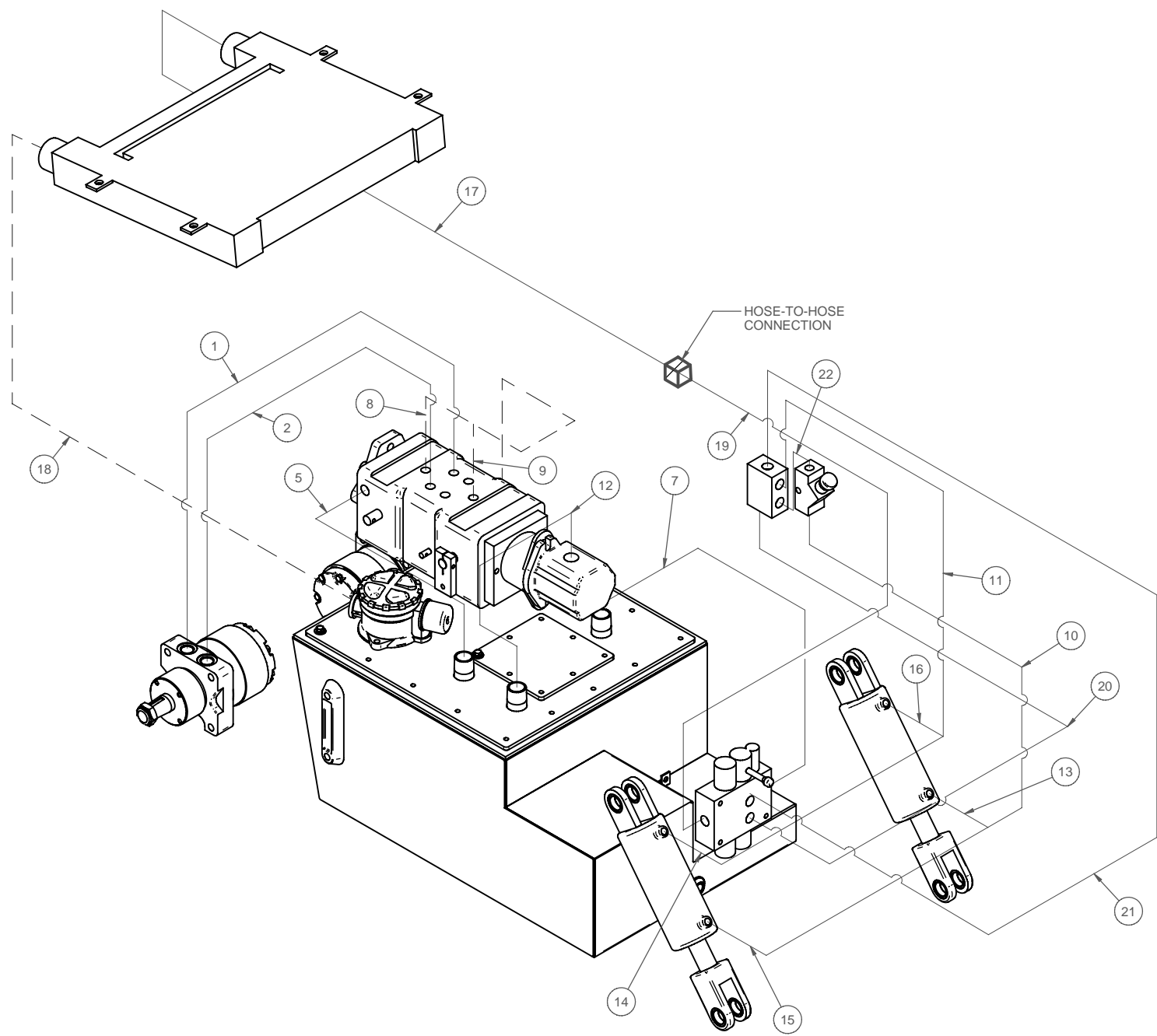
A	G4	ADDED NEEDLE VALVE; (BOM) ITEM #10 WAS	5/20/03	PTR
		P002595; (BOM) ADDED ITEM #22		
REV	ZONE	DESCRIPTION	DATE	BY

REVISION

THIS DRAWING AND THE DESIGN SHOWN THEREIN IS THE PROPERTY OF U.S. FILTER WHEELABRATOR AND USE OR COPIES THEREOF CANNOT BE MADE WITHOUT WRITTEN CONSENT.

<table border="1"> <tr> <th>REV</th> <th>ZONE</th> <th>DESCRIPTION</th> <th>DATE</th> <th>BY</th> </tr> <tr> <td> </td> <td> </td> <td> </td> <td> </td> <td> </td> </tr> </table>	REV	ZONE	DESCRIPTION	DATE	BY						<table border="1"> <tr> <th colspan="3">DIMENSIONAL TOLERANCES</th> </tr> <tr> <th>FABRICATING</th> <th>WELDING & ASSEMBLY</th> <th>RELATIONAL</th> </tr> <tr> <td>(SHEARING, BURNING, PUNCHING)</td> <td></td> <td></td> </tr> <tr> <td>TWO PLACE DECIMALS (AND FRACTIONS)</td> <td>±0.06</td> <td>FLATNESS (IN OVERALL) LENGTH THROUGH 60.00"</td> </tr> <tr> <td>ANGULAR (POSITIONAL)</td> <td>±1/2°</td> <td>SQUARENESS (CORNER) CORNER, MAX. DIFFERENCE (IN DIAGONALS)</td> </tr> <tr> <td>BEND RADIUS IS EQUAL TO MATERIAL THICKNESS, UNLESS OTHERWISE NOTED.</td> <td>SL WELDMENTS</td> <td>±0.12"</td> </tr> </table>	DIMENSIONAL TOLERANCES			FABRICATING	WELDING & ASSEMBLY	RELATIONAL	(SHEARING, BURNING, PUNCHING)			TWO PLACE DECIMALS (AND FRACTIONS)	±0.06	FLATNESS (IN OVERALL) LENGTH THROUGH 60.00"	ANGULAR (POSITIONAL)	±1/2°	SQUARENESS (CORNER) CORNER, MAX. DIFFERENCE (IN DIAGONALS)	BEND RADIUS IS EQUAL TO MATERIAL THICKNESS, UNLESS OTHERWISE NOTED.	SL WELDMENTS	±0.12"	<table border="1"> <tr> <td>TOLERANCE MACHINING</td> <td>U.S. FILTER</td> <td>6215 ALUMA VALLEY DRIVE OKLAHOMA CITY, OK 73121 U.S.A.</td> </tr> <tr> <td>ANGLES ±.500°</td> <td>BLASTRAC</td> <td></td> </tr> <tr> <td>1 PL DEC ±.060</td> <td></td> <td></td> </tr> <tr> <td>2 PL DEC ±.010</td> <td></td> <td></td> </tr> <tr> <td>3 PL DEC ±.005</td> <td></td> <td></td> </tr> </table>	TOLERANCE MACHINING	U.S. FILTER	6215 ALUMA VALLEY DRIVE OKLAHOMA CITY, OK 73121 U.S.A.	ANGLES ±.500°	BLASTRAC		1 PL DEC ±.060			2 PL DEC ±.010			3 PL DEC ±.005		
REV	ZONE	DESCRIPTION	DATE	BY																																									
DIMENSIONAL TOLERANCES																																													
FABRICATING	WELDING & ASSEMBLY	RELATIONAL																																											
(SHEARING, BURNING, PUNCHING)																																													
TWO PLACE DECIMALS (AND FRACTIONS)	±0.06	FLATNESS (IN OVERALL) LENGTH THROUGH 60.00"																																											
ANGULAR (POSITIONAL)	±1/2°	SQUARENESS (CORNER) CORNER, MAX. DIFFERENCE (IN DIAGONALS)																																											
BEND RADIUS IS EQUAL TO MATERIAL THICKNESS, UNLESS OTHERWISE NOTED.	SL WELDMENTS	±0.12"																																											
TOLERANCE MACHINING	U.S. FILTER	6215 ALUMA VALLEY DRIVE OKLAHOMA CITY, OK 73121 U.S.A.																																											
ANGLES ±.500°	BLASTRAC																																												
1 PL DEC ±.060																																													
2 PL DEC ±.010																																													
3 PL DEC ±.005																																													

SCALE	1:4	DRWN	PTR	DATE	1/14/02	SHT	1 OF 2	700-SD0014
-------	-----	------	-----	------	---------	-----	--------	-------------------



REV	ZONE	DESCRIPTION	DATE	BY
DIMENSIONAL TOLERANCES				
FABRICATING		WELDING & ASSEMBLY		RELATIONAL
(SHEARING, BURNING, PUNCHING)				
TWO PLACE DECIMALS	+/- 0.06"	TWO PLACE DECIMALS	+/- 0.06"	FLATNESS (IN OVERALL
(AND FRACTIONS)		(AND FRACTIONS)		LENGTH THROUGH 60.00")
ANGULAR (POSITIONAL)	+/- 1/2°	ANGULAR (POSITIONAL)	+/- 1/2°	SQUARENESS (CORNER
BEND RADIUS IS EQUAL TO MATERIAL		SLL WELDMENTS	+/- 0.12"	CORNER, MAX. DIFFERENCE
THICKNESS, UNLESS OTHERWISE NOTED.				(IN DIAGONALS)

REV	ZONE	DESCRIPTION	DATE	BY
REVISION				
THIS DRAWING AND THE DESIGN SHOWN THEREIN IS THE PROPERTY OF U.S. FILTER WHEELABRATOR AND USE OR COPIES THEREOF CANNOT BE MADE WITHOUT WRITTEN CONSENT.				
NEXT ASSY		REF. DWG	PART NO.	
TOLERANCE MACHINING		U.S. FILTER		
ANGLES ± .500°		6215 ALUMA VALLEY DRIVE		
1 PL DEC ± .060		OKLAHOMA CITY, OK 73121		
2 PL DEC ± .010		U.S.A.		
3 PL DEC ± .005		3-D HYDRAULIC SCHEMATIC		
		BMS-270LP11		
SCALE	1:4	DRWN	PTR	DATE
				1/14/02
		SHT	2 OF 2	
		700-SD0014		